

Based on a very popular design, this versatile telescopic roller banner is lightweight, portable and very simple to use.



## features & benefits

- Choice of 800 or 1000mm widths
- Available in anodised silver
- Charcoal grey end caps
- Twist-out stabilising foot with stylish end mouldings
- Internal graphic housing designed to accommodate graphic media up to 450 microns thick\*
- Secure slide in graphic system
- Universal grippa/self adhesive top rail
- Ratchet tensioner
- Hybrid pole, part bungee and part telescopic
- Supplied with quality foam padded carry bag

\*Please test your substrate suitability before use



Universal grippa/  
self-adhesive  
top rail



Slide-in Graphic



Hybrid Pole  
(part bungee /  
part telescopic)



Ratchet  
Tensioner\*



\*Graphic tension may be re-applied or added to by turning the ratchet tensioner clockwise; 6 clicks of the ratchet tensioner equal 1 revolution of the banner stand spring.  
(NB Units are supplied pre-tensioned)

## hardware specifications

Hardware Dimensions (mm):  
2220 max (h) x 840 (w) x 370 (d) approx.  
87.40" (h) x 33.1" (w) x 14.6" (d) approx  
(nb depth includes twist out foot)  
Base Dimensions (mm):  
95 (h) x 840 (w) x 370 (d) approx.  
3.8" (h) x 33.1" (w) x 14.6" (d) approx.  
(nb depth includes twist out foot)  
Weight:  
3kg (6.6lbs) approx (including carry bag)

## graphic specifications

Visible Graphic Dimensions (mm):  
2130 max (h) x 800 or 1000 (w)  
83.9" max (h) x 31.5" or 39.4" (w)  
1490 min (h) x 800 or 1000 (w)  
58.7" min (h) x 31.5" or 39.4" (w)  
Substrate: Add 300mm (12") to base of  
graphic to allow for roller mechanism  
Reccomended material thickness  
225 - 450 microns (8.86 - 17.72 Mils)

## additional info

Availability:  
Anodised Silver  
Included in kit:  
Base, top rail, hybrid pole  
and carry bag

# Assembly Instructions

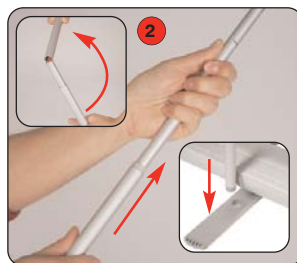
## Banner stand assembly



**Kit includes:**  
Base, top rail, hybrid pole and carry bag.

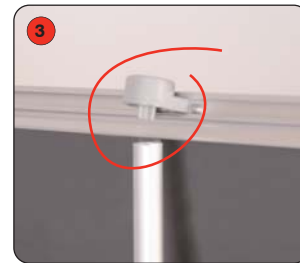


1 Twist out the stabilising foot from the base. Turn over.



2 Open up the bungee part of the pole and fit together, then twist out the telescopic part to the desired height.

**Twist clockwise to lock, anti-clockwise to unlock**  
Insert the pole into the foot.



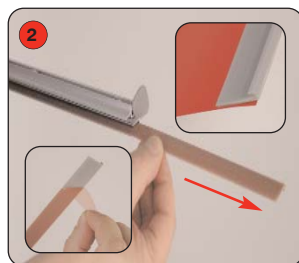
3 Raise the graphic from the base and secure into position by locating the top rail onto the pole.

**Important: Hold the top rail whilst lowering the banner to prevent damage to the graphic. (do not drop)**

## Graphic attachment - Adhesive rail option



1 Rotate the rail end cap to expose the plastic adhesive rail insert.



2 Slide the rail insert from the top rail. Adhere the insert to the front of the graphic.

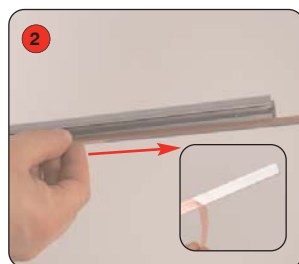


3 Slide the rail insert and graphic into the top rail. Close the rail end cap.

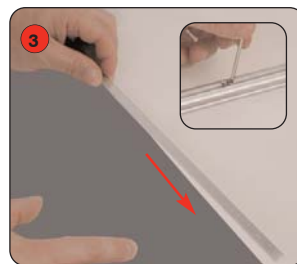
## Graphic attachment - Grippa rail option (ideal for textiles and PVC)



1 Using the Allen key stored in the base, loosen the top rail screws. Rotate the rail end cap to expose the steel flat bar.



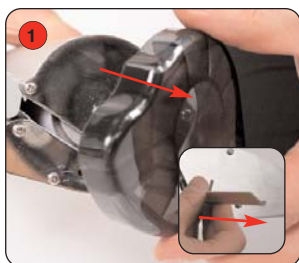
2 Slide the flat bar from the top rail and remove the backing paper.



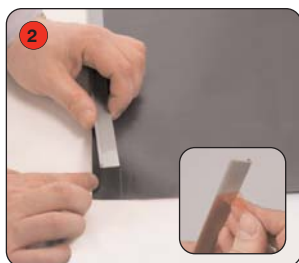
3 Adhere the flat bar to the back of the graphic. Slide the flat bar and graphic into the top rail. Tighten the screws to secure the top rail. Close the rail end cap.



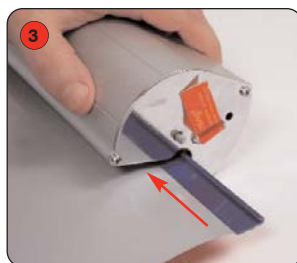
## Graphic attachment - Base



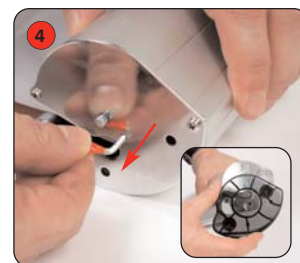
1 Remove one moulded end cap from the base. Slide the plastic insert from the base.



2 Adhere the insert to the **back** of the graphic.



3 Slide the insert and graphic into the base.



4 Whilst holding the graphic, remove the locking pin from the base and gently allow the graphic to retract. Re-fit the moulded end cap.

**WARNING: Always attach graphic to base and top rail before removing the locking pin.**

After fitting, the graphic should be left for 24 hours before use to ensure the adhesive bonds sufficiently. Opening the cassette may invalidate the product warranty.