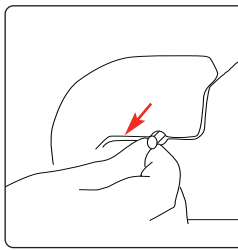
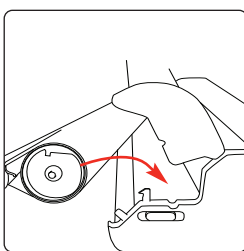
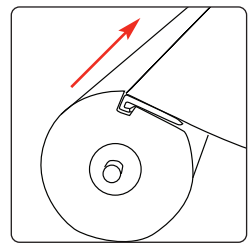
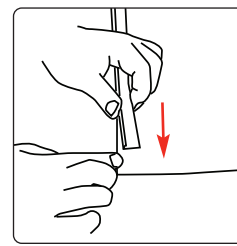
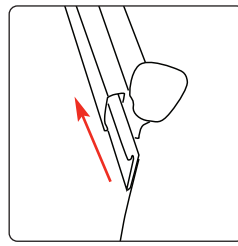
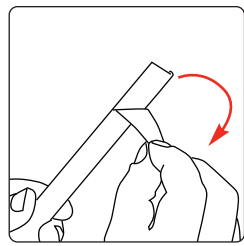
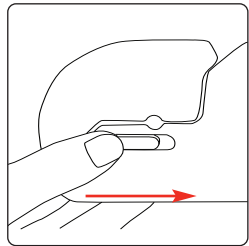


Hardware specifications	Graphic specifications/ additional info
<p>Assembled dimensions 2170mm (h) x 846mm (w) x 180mm (d) (mm)</p> <p>Weight: 4.08kg Single sided 800mm 4.68kg Double sided 800mm 5.2kg Single sided 850mm 5.8kg Double sided 850mm 6kg Single sided 1000mm 6.6kg Double sided 1000mm</p>	<p>Graphic Area: 2120(h) x 800/850/1000 (w) (mm) Substrate: Add 300mm to base of graphic to allow for roller mechanism</p> <p>Upgrade to additional cassette and rail doubler to convert to double-sided unit Code: UB501C- 800/850/1000</p>

Attaching graphic

When attaching graphic sliders make sure the slider is attached to the front of the graphic for the graphic rail and to the back for the graphic cassette.



Note: Pull up on the graphic to release the roller mechanism

Note: When changing graphic please ensure you replace the pin into the roller before opening the banner